



Year 11

Class of 2021

Easter Revision Guidance



Rosebery School

Excellence. Endeavour. Opportunity.





Subject guidance, hints and tips



Rosebery School

Excellence. Endeavour. Opportunity.



English Language and Literature



Areas to prioritise for revision:

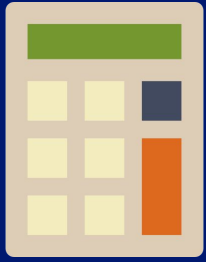
- Literature P1: **Shakespeare**
- Literature P2: complete **one** of *either* **AIC/LotF, Poetry Anthology or Unseen Poetry** - the area you think you can most improve upon from your November mock
- **Language P1** reading and writing (fiction)

Areas that are unlikely to be assessed:

- Literature P1: **the novel**
- Literature P2: **two** of *either* **AIC/LotF, Poetry Anthology or Unseen Poetry**
- **Language P2** reading and writing (non-fiction)

Don't forget to use the English department revision guide to support your revision for these sections. Your teacher has put this on Google Classroom.

Maths



- All information can be found in the booklet given to you by your maths teacher.
- A copy of the **foundation** revision booklet can be found [here](#).
- A copy of the **higher** revision booklet can be found [here](#).

Combined Science - Higher



Areas to prioritise for revision:

Areas that are unlikely to be assessed:

- **Biology** - Paper 2 Content - more information [here](#)
 - *5 - Homeostasis & Response; 6 - Inheritance, Variation & Evolution; 7- Ecology*
- **Chemistry** - Paper 2 Content - more information [here](#)
 - *6 - Rates and equilibrium; 7 - Organic chemistry; 8 - Chemical analysis; 9 Chemistry of the atmosphere; 10 Using resources*
- **Physics** - Paper 2 Content - more information [here](#)
 - *5 - Forces; 6 - Waves; 7 - Magnetism & Electromagnetism*

- Paper 1

See the [Rosebery Science Google Site](#) for lots more revision support.

Combined Science - Foundation



Areas to prioritise for revision:

- **Biology** - Paper 2 Content - more information [here](#)
(HT content not needed)
 - *5 - Homeostasis & Response; 6 - Inheritance, Variation & Evolution; 7- Ecology*
- **Chemistry** - Paper 2 Content - more information [here](#)
 - *6 - Rates and equilibrium; 7 - Organic chemistry; 8 - Chemical analysis; 9 - Chemistry of the atmosphere; 10 - Using resources*
- **Physics** - Paper 2 Content - more information [here](#)
(HT content not needed)
5 - Forces; 6 - Waves; 7 - Magnetism & Electromagnetism

See the [Rosebery Science Google Site](#) for lots more revision support

Areas that are unlikely to be assessed:

- Paper 1

Biology



Areas of specification to prioritise for revision:

- **Paper 2** content - more information [here](#)

This will include:

- 5 - Homeostasis & Response
- 6 - Inheritance, Variation & Evolution
- 7 - Ecology

See the [Rosebery Science Google Site](#) for lots more revision support.

Areas of specification that are unlikely to be assessed:

- **Paper 1** content
 - 7.2.3 Decomposition
 - 7.2.4 Impact of Environmental change
 - 7.4 Trophic levels
 - 7.5 Food Production



Chemistry



Areas to prioritise for revision:

- **Paper 2** content - more information [here](#)

This will include:

- 6 Rates and equilibrium
- 7 Organic chemistry
- 8 Chemical analysis
- 9 Chemistry of the atmosphere
- 10 Using resources

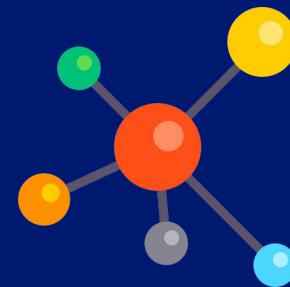
Areas that are unlikely to be assessed:

- **Paper 1** content + 10.3 and 10.4
 - 10.3 Using materials
 - 10.4 The Haber process and the use of NPK fertilizers

Throughout chemistry there is a general expectation of the understanding of themes from the topics 4.1 - 4.3 (chemical reactions)



Physics



Areas to prioritise for revision:

Paper 2 content- spec content [here](#) + a small amount of [paper 1 synoptic](#).

Topic summary:

- Energy stores and transfers
- 5 Forces
- 6 Waves
- 8 Space

Required practicals [p52-65](#) (force and extension onwards)

Areas that are unlikely to be assessed:

- Paper 1 content, and
- The following Paper 2 content:
 - 7 Magnetism and electromagnetism
 - Motion graphs (see crossed out sections on Paper 2 spec link)

See the [Rosebery Science Google Site](#) for lots more revision support



Continue to complete all units below:

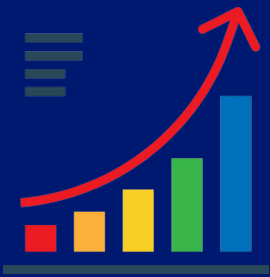
- Places and Space
- Flesh and Bones
- Identity
- Preparation for a final piece

Areas that are unlikely to be assessed:

- All work will be used to contribute to a final assessment



Business Studies



Areas to prioritise for revision:

- 3.5 Marketing
- 3.6 Finance

** excluding**

- *Average rate of return*
- **3.6.4 Analysing the financial performance of a business; Purpose of financial statements, Components of financial statements, Interpretation of data given on financial statements.**

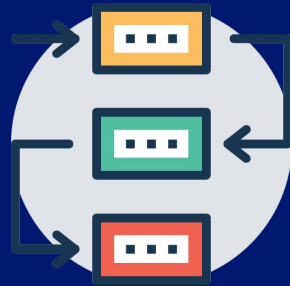
Areas that are unlikely to be assessed:

- 3.1 Business in the real world
- 3.2 Influences on business
- 3.3 Business operations
- 3.4 Human resources

See your class's Google classroom for more revision resources:

- [11A: Mrs Byrne](#)
- [11B: Mrs Hawkey](#)
- [11C: Mr Harvey](#)

Computer Science



Areas to prioritise for revision:

- **Paper 1** - 1.1 System Architecture, 1.2 Memory, 1.3 Storage, 1.6 System Security
- **Paper 2** - 2.2 Programming, 2.3 Producing Robust Programs, 2.6 Data Representation

For specifics see the green listed items for each paper (emailed)

Revision resources can be found on your Google Classroom page and the [Year 11 Revision Site](#)

Areas that are unlikely to be assessed:

- **Paper 1** - 1.4 Wired and Wireless Networks, 1.5 Network Topologies, Protocols and Layers, 1.7 Systems Software, 1.8 Ethical, Legal, Cultural and Environmental Concerns (*purple/red listed items*)
- **Paper 2** - 2.1 Algorithms, 2.4 Computational Logic, 2.5 Translators and Facilities of Languages (*purple listed items*)



Drama



Areas to prioritise for revision:

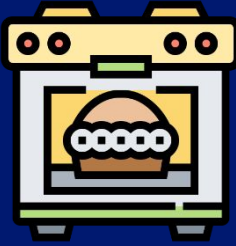
- **Component 2 NEA scripted performance:** Lines learnt and blocking reviewed
- **Component 3 Section A: The Crucible:** Characters, Plot, Context, Design Elements (Costume, Lighting, Sound, Set)

Areas that are unlikely to be assessed:

- Live Theatre Evaluation (Section B of Component 3)
- Design elements Props/Stage furniture and Staging



Food Production and Nutrition



Areas to prioritise for revision:

- **Food, Nutrition and Health:** macronutrients, informed choices, diet and health, energy
- **Food Science:** functional and chemical properties of food (see unlikely topics)
- **Food Safety**
- **Food Choice:** British and international cuisine, religion, sensory evaluation
- **Food Provenance:** food sources, environment, processing and production, technological developments

Areas that are unlikely to be assessed:

- **Food, Nutrition and Health:** LBV/HBV proteins, micronutrients, teenagers, young children, CHD
- **Food Science:** heat transfer methods, denaturation, coagulation, gelatinisation, shortening, enzymic browning
- **Food Safety:** food spoilage and contamination, yoghurt and cheese, buying and storing food, personal hygiene
- **Food Choice:** factors affecting food choice, labelling and marketing
- **Food Provenance:** locally produced, seasonal, fairtrade, milk to cheese/yoghurt,



Geography



Areas to prioritise for revision:

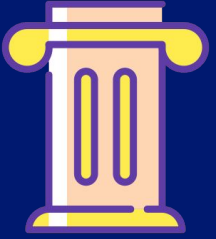
- **Physical Geography:** The Challenge of Natural Hazards (Tectonic, Weather & Climate Change).
- **Human Geography:** Urban Issues and Challenges (The Urban World & Rio de Janeiro).

Areas that are unlikely to be assessed:

- The Living World
- Physical Landscapes in the UK
- Urban Change in the UK
- The Changing Economic World
- The Challenge of Resource Management



History



Areas to prioritise for revision:

- **Changes in Health and Medicine in Britain c.500 to present day**
 - Attempts to prevent illness and disease
 - Attempts to treat and cure illness and disease
 - Developments in patient care
- **The Development of the USSR 1924 - 1991**
 - Changing Life under Stalin (including some terror)
 - Cold War Relations 1945-91
 - Political Reform under Gorbachev

[See here for more information and to access a full range of revision material](#)

Areas that are unlikely to be assessed:

- USA Module
- All Health and Medicine and USSR modules **not** referenced on the left
← here

Media Studies



Areas to prioritise for revision:

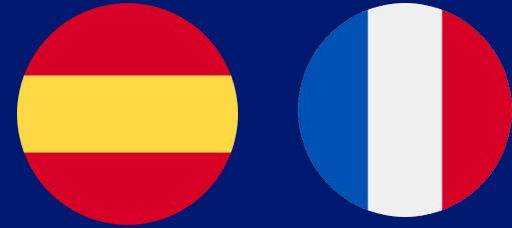
- Paper 1
- A Newspaper front pages
- A Film posters
- B Radio Industry and Audiences
or
- B Video Games Industry and Audiences

Areas that are unlikely to be assessed:

- Paper 2 (Sitcoms & Music Videos)
- 1A Magazines
- 1A Adverts
- 1B Film Industry
- 1B Newspaper Industry and Audiences



Modern Foreign Languages



Areas to prioritise for revision:

Reading and Writing (90/150 words) on:

- Family, friends and relationships
- Free-time (sports, cinema, TV, eating out)
- Home and local area
- Holidays
- School subjects and school life
- Jobs and future plans

Areas that are unlikely to be assessed:

Listening, Reading and Writing on:

- Technology
- Customs and festivals
- Environment
- Healthy living
- Social issues

See your Google Classroom page for more revision resources

Music



Areas to prioritise for revision:

Continue revising for all areas of study:

- Vocal Music
- Instrumental Music
- Music for Screen & Stage
- Fusions

Areas that are unlikely to be assessed:

- Composition NEA has been completed
- Performance NEA has been completed
- **All set works, dictation and the essay question will be assessed**



Physical Education



Areas to prioritise for revision:

Component 2 - Health Fitness & Wellbeing:

- Health
- Consequences of a sedentary lifestyle
- Diet and energy

Component 2- Sports Psychology:

- Classification of skills
- Guidance
- Feedback

Areas that are unlikely to be assessed:

- Component 1: all content
- Component 2: Sociocultural Influences



Religious Studies



Areas to prioritise for revision:

- Philosophy. The nature of God. The design of the world.
- Islam Ramadan. Prophethood. Prayer and sources of authority.
- Christianity. Rites of passage. Holy Week and the Trinity
- Dialogue within and between religious and non-religious groups.

Areas that are unlikely to be assessed:

- Relationships and families
- Religion peace and conflict.
- Islam Festivals. Angels Eschatological beliefs.
- Christianity. Worship. Eschatology. Worship. Pilgrimage. Celebrations.



Sociology



Areas to prioritise for revision:

- **Paper 2:** Crime and Deviance
- **Paper 2:** Stratification
- Research methods linked to paper 2
- Sociological theory linked to paper 2

Areas that are unlikely to be assessed:

- **Paper 1:** Families
- **Paper 1:** Education

[See here for more revision support](#)

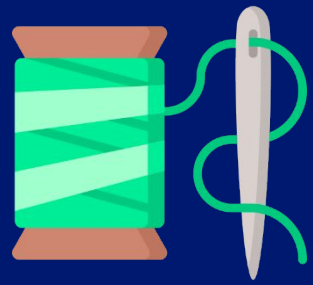


Rosebery School

Excellence. Endeavour. Opportunity.



Textiles



Areas to prioritise for revision:

- Section 1 with a Textiles focus
- Section 2
- Section 3

[See here for revision resources and list](#)

Areas that are unlikely to be assessed:

- Section 1: other materials (assessed in November mock)
- Section 2: finishes, ecological issues, pattern cutting, wastage (assessed in November mock)





Rosebery School

Excellence. Endeavour. Opportunity.





Rosebery School

Excellence. Endeavour. Opportunity.

